



**LAND  
SUPPORT**

## Press conference on the LANDSUPPORT H2020 project

**An operational tool to  
challenge land take at the  
European scale**



**Wednesday , 3 July 2019  
at 12:00-13:00**



*Franco Maria Malfatti room,  
Sofitel Brussel Europe,  
1 Place Jourdan, 1040 Bruxelles*

**LANDSUPPORT.eu**



## Background

Soil Sealing by urban sprawl is one of the best-known land degradation processes strongly affecting the quality of the European agricultural landscape and food security. For a long time Europe has recognised this evidence but in the last decade little has changed and land take has proceeded at a high rate decreasing our fertile agricultural land, putting biodiversity at risk, increasing the risk of flooding and water scarcity and contributing to global warming.

Therefore, action is required since “future generations will not see a healthy soil coming back within their lifetime once it has been destroyed” (SWD (2012) 101 final/2).

## The objective of the press conference

The interdisciplinary H2020 **LANDSUPPORT** project – thanks to its unique combination of knowledge and technologies – is developing a free web-based decision support system to analyse, monitor and mitigate land take for the entire European territory (tool K of the project).

The tool – in its prototype version but fully functioning – is presented and launched through a press conference on 3 July 2019.

The Press Conference will demonstrate the way ahead for better planning our European rural landscape. The Press Conference will see the contributions of agriculture and soil experts (from **LANDSUPPORT** project), European and National Associations of Spatial planners (ECTP, INU) and National Public Authorities (ISPRA) having a specific role in land take monitoring.

## SOME INSIGHTS

The Land Take tool is a component of a more general multipurpose Geospatial Decision Support System (S-DSS) named **LANDSUPPORT**. The system – in its prototype version – is currently in use ([landsupport.eu](http://landsupport.eu)) and fully active within the confines of the EU administrative boundaries. **LANDSUPPORT** is a Geospatial Cyber-Infrastructure strongly based on the use of free open-source geospatial libraries and programs and enables users to interact directly with the geospatial data on the map via the web.

### DATA

*The dataset connected to the Land Take tool includes geo-referenced data and metadata from different sources. The main types of data include: (i) Copernicus HRL, (ii) thematic maps (land use, soil, etc.) with relating databases, (iii) new data produced by simulation modelling. By the end of the project EO data will be employed to produce a yearly quantification of land take.*

### MODELS

*The models include (i) monitoring land take by the evaluation of soil loss or gain between different years, (ii) on-the-fly quantification of rural fragmentation to challenge urban sprawl that alters the integrity of the ecosystem functions of the rural landscape, (iii) effects of soil sealing on soil ecosystem services.*

### DASHBOARD

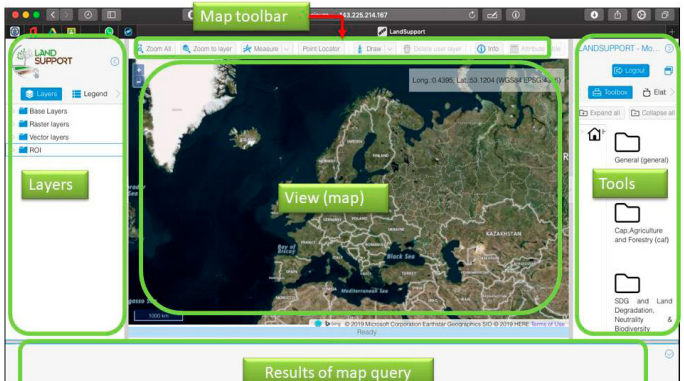
*The figure opposite shows the general outline of the dashboard which is made up of five different sections (green boxes). The usefulness of this tool lies in the possibility it gives to apply several processing procedures, ranging from simple visualisation of thematic maps with the option of running zonal attribute operations to more complex elaborations by applying dynamic simulation models.*

## APPLICATIONS

*The system can address land take mitigation and spatial planning issues by a multitemporal accountability of land take and by performing on-the-fly calculation of critical indicators such as land fragmentation (in the figure aside is reported a land fragmentation map of the province of Milan).*

The system provides a support for the following use cases:

- National Public Authorities who require multi-temporal monitoring of land take over their territory
- Spatial Planning at Regional and Province scale where planning guidelines/directions are to be adopted.
- Spatial Planning at the Municipality level which it is typically the administrative level where final land take decisions are adopted



# Agenda

**12:00-12:05** Welcome  
*Agnieszka Romanowicz* - European Commission DG-AGRI

**12:05-12:15** **LANDSUPPORT** H2020 project: challenging land take as major threat of our land and soils  
*Fabio Terribile* - project leader

**12:15-12:30** Live demo of the land take tool at European scale  
*Giuliano Langella* - Università di Napoli Federico II

**12:30-13:00** Q&A from the floor including three planned comments by:

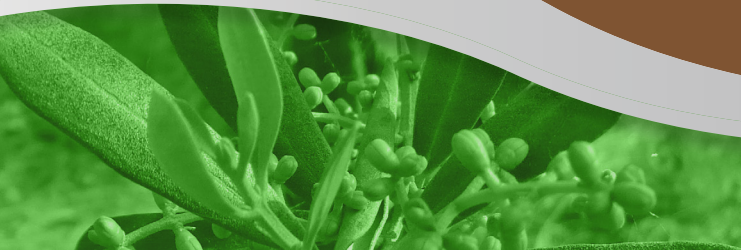
- *Joris Scheers* - European Council of Spatial Planners
- *Francesco Domenico Moccia* - Istituto Nazionale di Urbanistica
- *Michele Munafò* - Italian Institute for Environmental Protection and Research

**13:00-15:00** Hands-on session on the web: The **LANDSUPPORT** Land Take tool (participants can also use their own PC & tablet)

- *Carlo De Michele* - Ariespace
- *Giuliano Langella* - Università di Napoli Federico II

Press-conference

Post-press-conference





**Contact us  
for more information**

**Kathrin Prebeck**  
kathrin.prebeck@modis.com



**WWW.LANDSUPPORT.EU**



This project is funded by H2020 under topic RUR-03-2017,  
Grant Agreement Nr 774234.